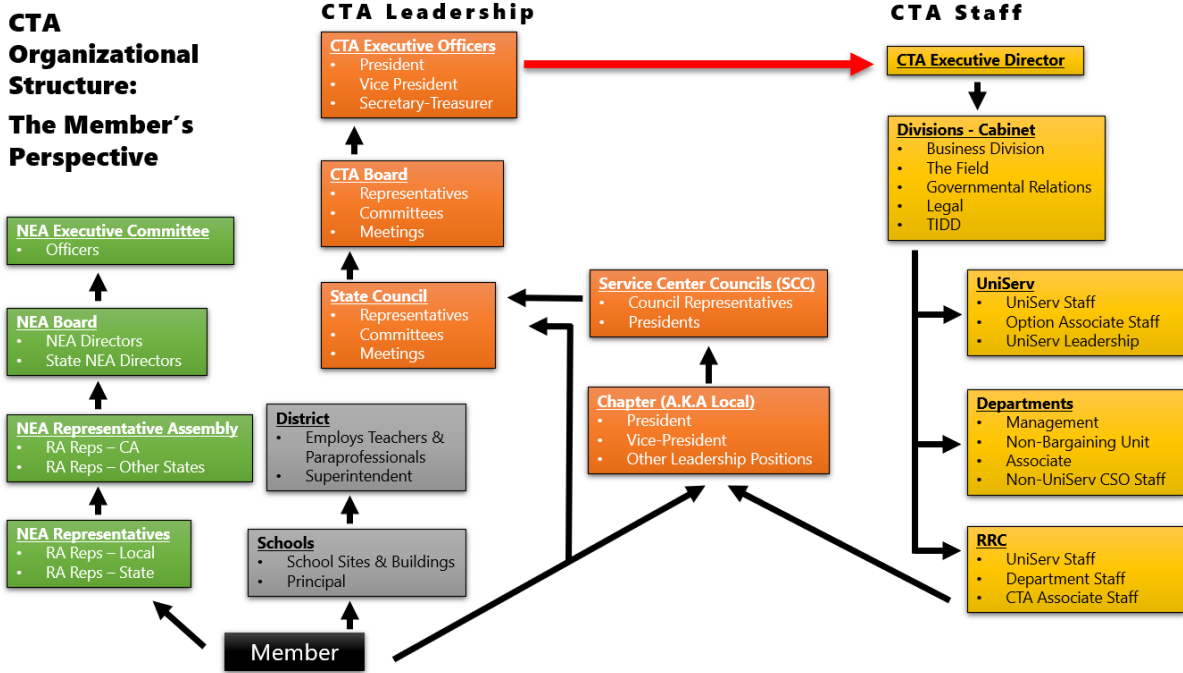
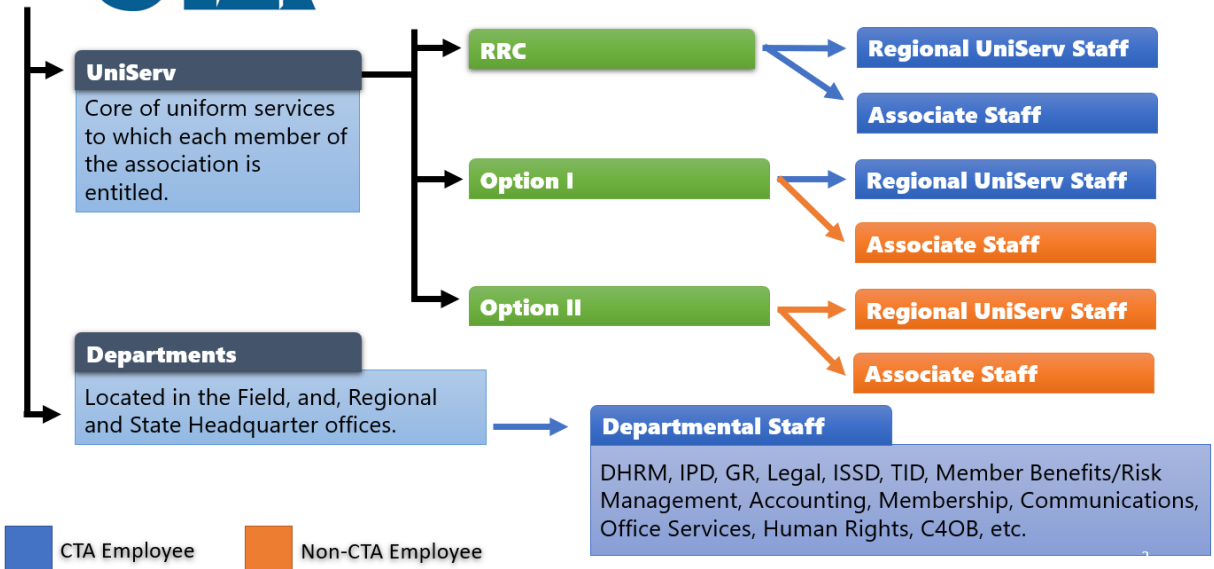


CTA Organizational, Governance and Staff Services Structures

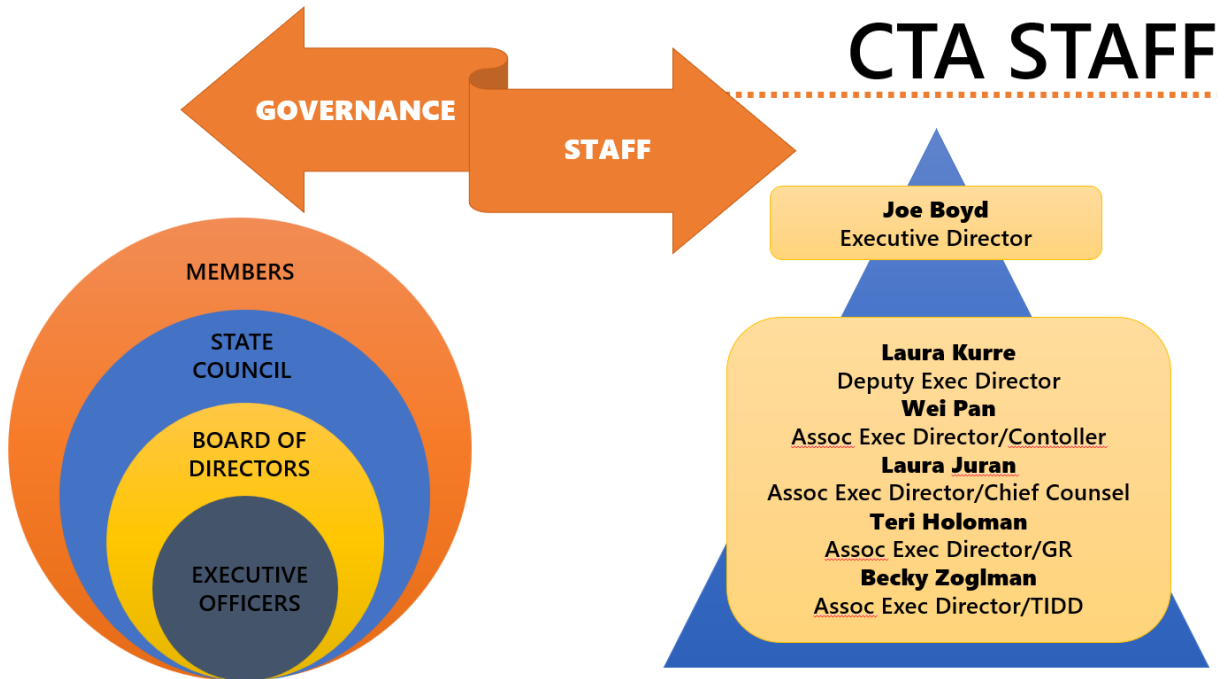


DELIVERY OF SERVICE





CTA Organizational, Governance and Staff Services Structures





CTA Organizational, Governance and Staff Services Structures

Primary Contact Staff	Field Based Staff By Region	Headquarters Based Department Staff
<p>Regional UniServ Staff</p> <p>(a.k.a., Primary Contact Staff, Chapter Services Consultants or Executive Directors)</p>	<p>Regional Management</p> <p>Center for Organizing and Bargaining (C4OB) Bargaining, Organizing, and Charter Specialists</p> <p>Communications</p> <p>Community College Association</p> <p>CTA ESP</p> <p>Human Rights Consultants</p> <p>Instruction and Professional Development Consultants</p> <p>Political Organizing Specialists</p>	<p>Accounting/Membership</p> <p>Central Services</p> <p>Communications</p> <p>Governance</p> <p>Governmental Relations</p> <p>Human Resources</p> <p>Human Rights</p> <p>Integrated Systems and Strategies</p> <p>Instruction and Professional Development</p> <p>Legal Services</p> <p>Member Benefits</p> <p>Risk Management/Business Initiatives & Development</p> <p>Training Information and Development</p>